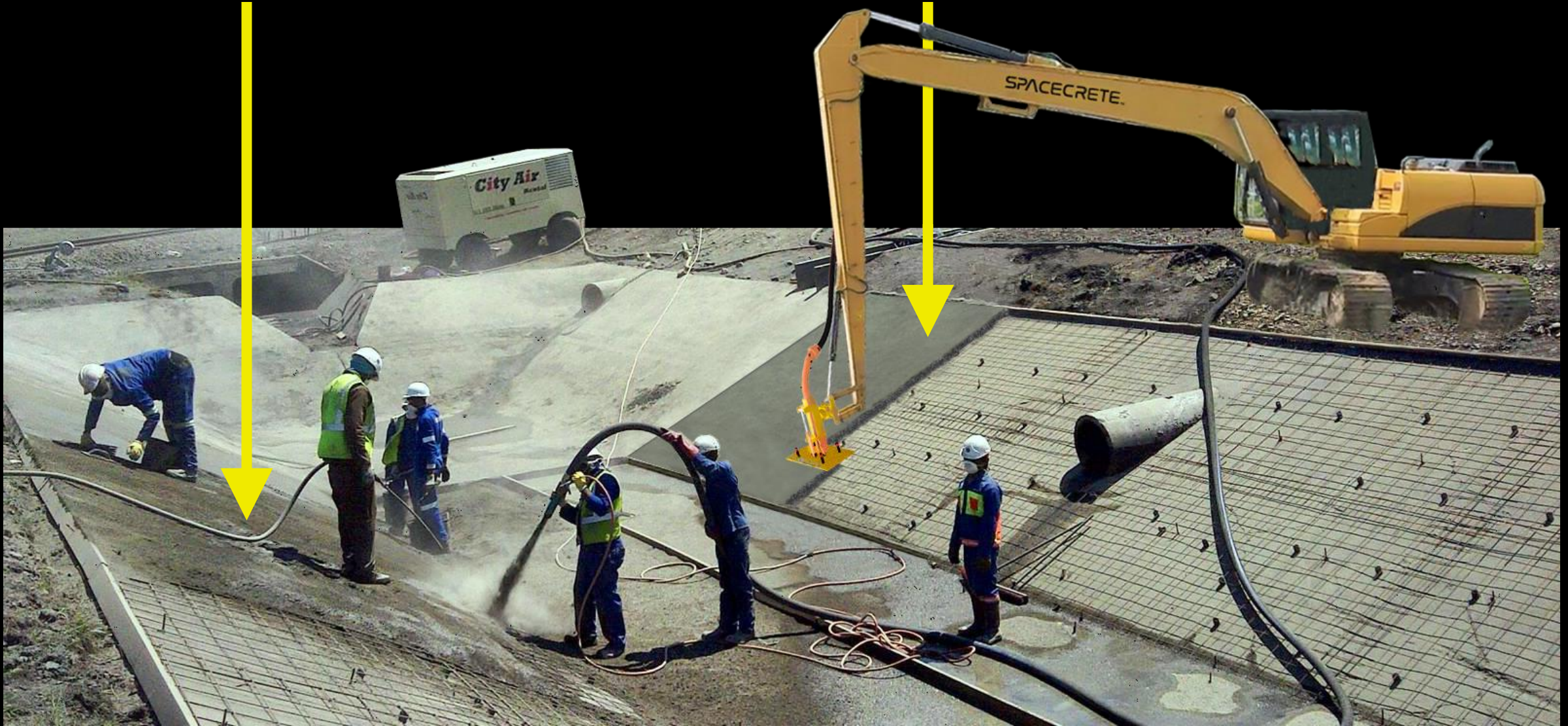


1. past v future

SpaceCrete™
TECHNOLOGIES

1907-2025

2026+



2. primitive

Vertical Concrete is Inefficient and



very costly

Carbon



unbearable pressure



wasteful & hazardous

Intensive

3. deteriorating

The Costs are Increasing

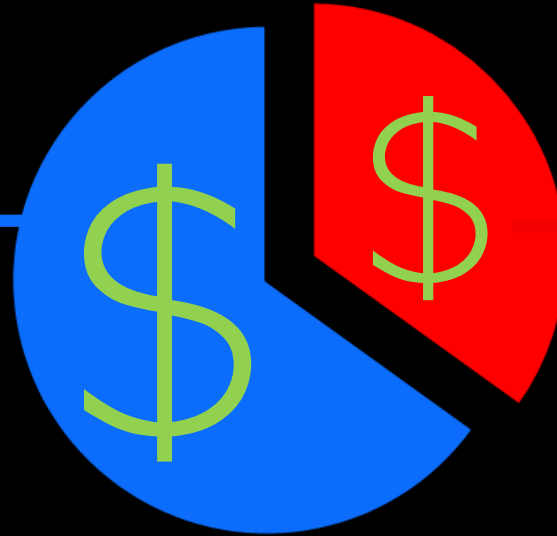
SpaceCrete[™]
TECHNOLOGIES

Labor

biggest cost of vertical concrete



Worker Shortage



Materials

present methods waste cement



CO₂ Overload



Hazards Exposure

4. our fix

SpaceCrete™
TECHNOLOGIES

Connect Two Worlds

digital systems



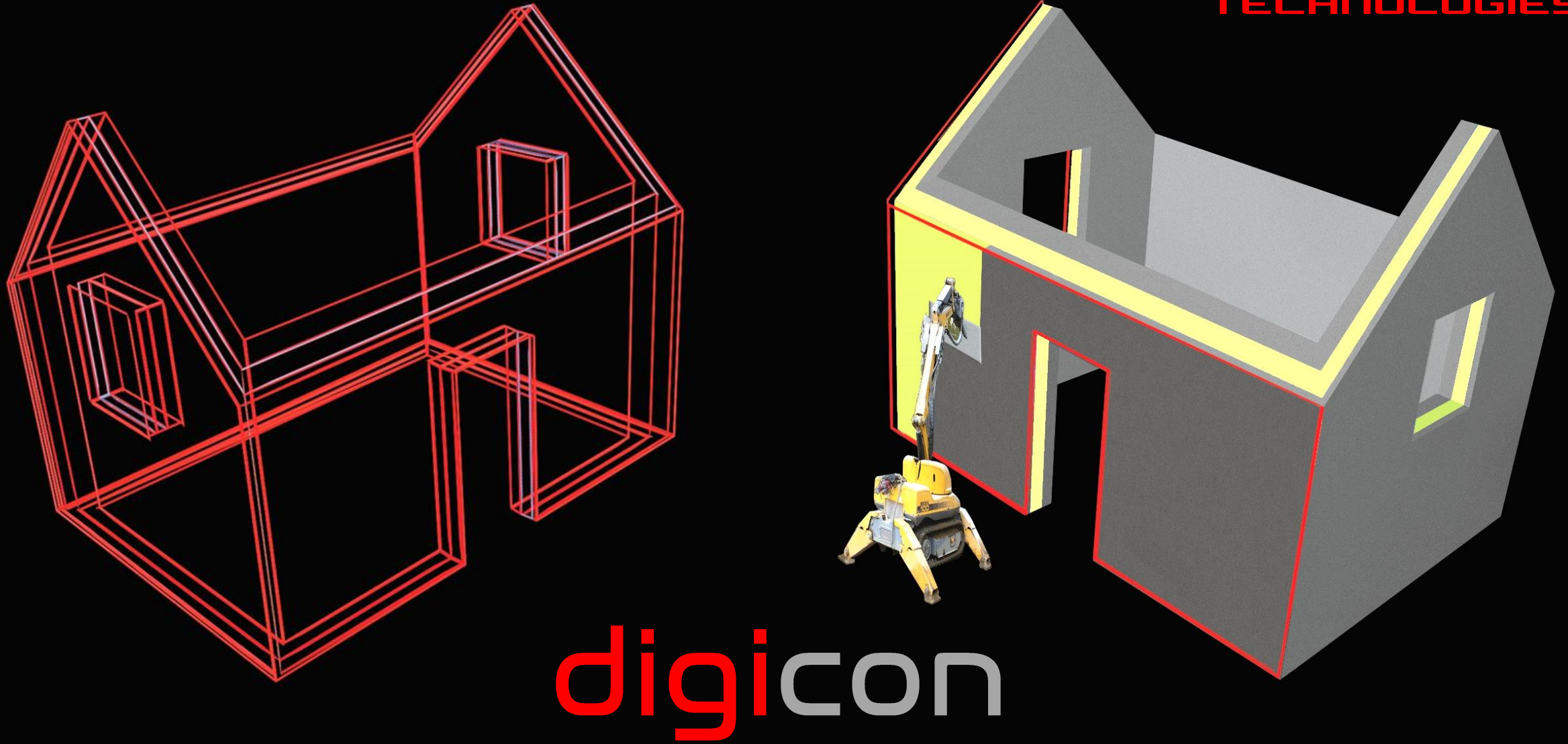
SpaceCrete™
TECHNOLOGIES

ANY concrete



5. an example

SpaceCrete™
TECHNOLOGIES



Automate all layers of your model.

6. how it works

ANY concrete

UNLIMITED possibilities



World of Concrete
Innovation of the Year

← 0.25 % 3D-Admix

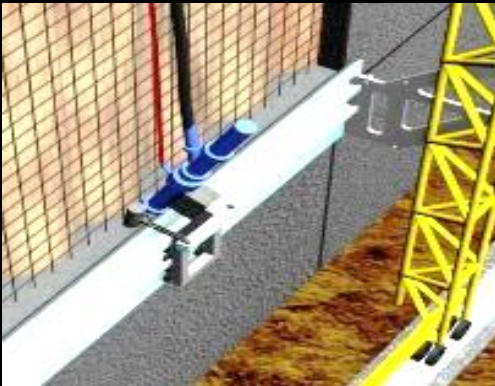


patented inline mixer

SpaceCrete
TECHNOLOGIES



3D-Print



2D-Print



GPS-Guided

Slip-Cast



Digital
Extrude

7. jobsite example

SpaceCrete™
TECHNOLOGIES

Typical Excavator with GPS



8. big contrast

SpaceCrete™
TECHNOLOGIES

Old

Slow • Rebounded • Wasted

New

Fast • Vibrated • Consolidated

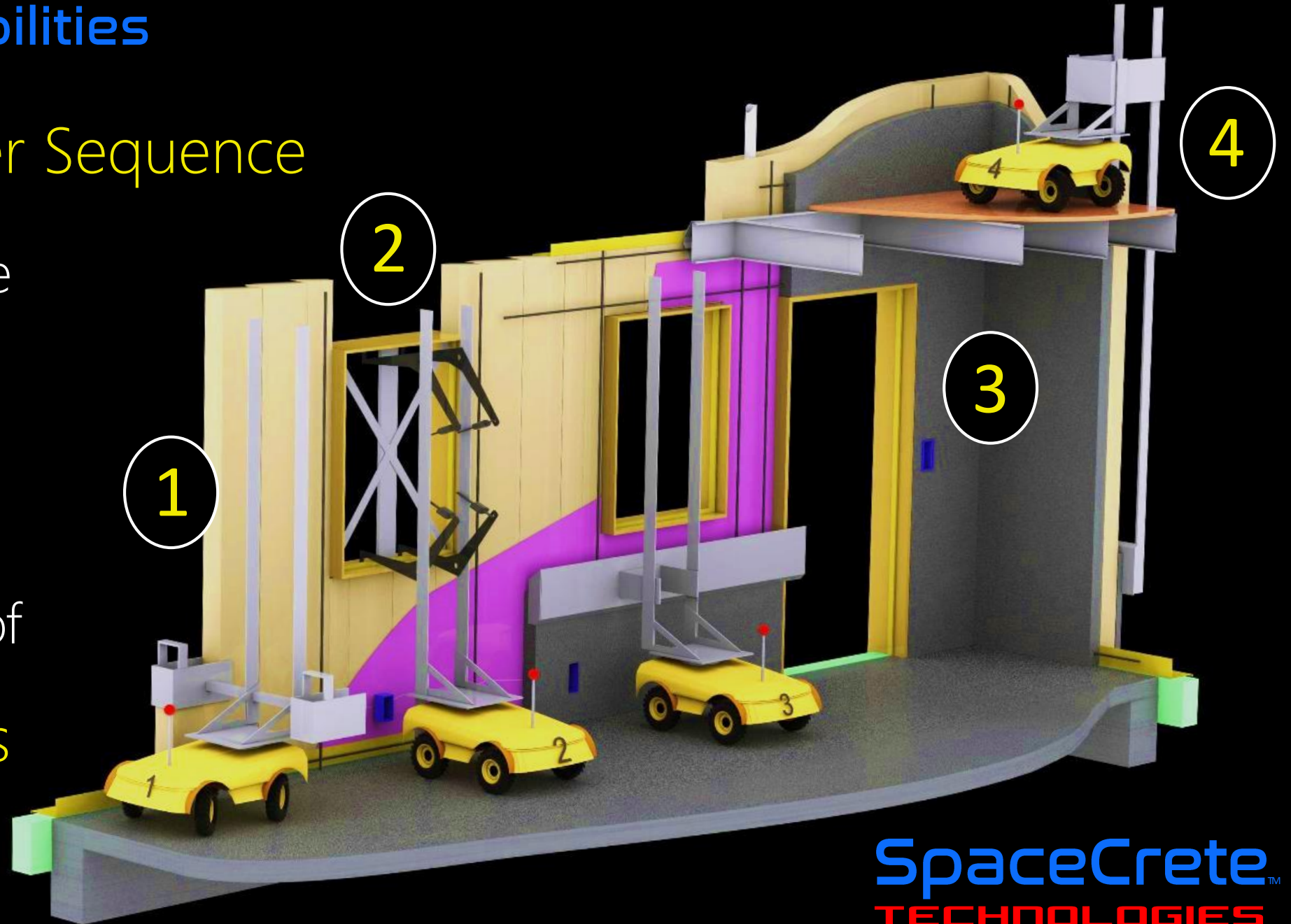


9. more possibilities

Radical Faster Sequence

- affordable
- strong
- passive
- fireproof
- floodproof

Meets Codes



SpaceCrete™
TECHNOLOGIES

10. realistic



SpaceCreteTM
TECHNOLOGIES

A unique experience
allows creative insight.



Michael Butler
Civil Engineer
Product Developer


Cal Poly SLO Architectural Engineering
Top of Class + "Outstanding Graduate"
44 Years in Construction / Engineering
Concrete and General Contractor
Housing – Commercial – Industrial
High Rise to the Biggest Building in the World
Over 1000 Unique Projects as Professional
7 & 9 Construction Patents to Date

Common Sense

10 years in building trades before
34 more in structural engineering.

Consequential IP

Broad Patents Pending

1. Inline Mixer **US Patented**
2. 3d-Admix **Patent Allowed**
3. Excavator/Robotic **US Patented**
4. Rapid Slip-Cast
5. Improve Sequence
6. Rebar-Lifting Automation
7. New Non-Stick Tech
8. Sonic Consolidation 



9. Single-Pass Stucco
10. Wildfire Hardening
11. 3D-Print Mix Correction
12. Electro-Mag Ties
13. Radial-Tower Extrusion
14. Window Receptacles
15. Pump Modulator
16. Sync w Analog Pumps

12. proven

Completed Permitted Test Projects

SpaceCrete™
TECHNOLOGIES



facilitates seismic reinforcing



Huge Successes
Delivered Concrete
Fastest Vertical Rate
4"-Thin Walls
[Youtube Videos](#)



13' lift of fresh concrete →



slip-cast vertically as fast as a foot per minute



first test of a Waller™ tool prototype

13. boundless

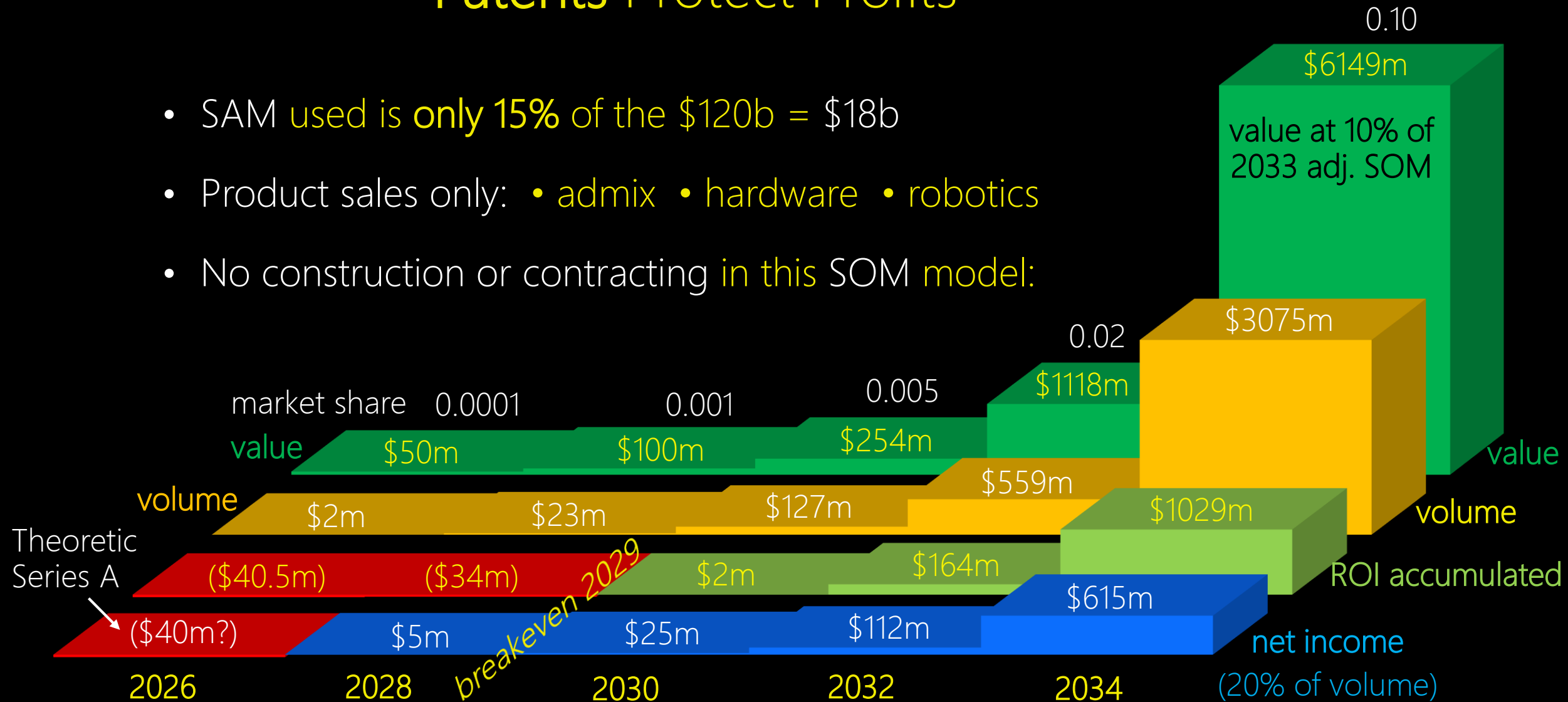
Many Favorable Applications

primary favorable applications

	infrastructure	industrial	commercial	housing	other
process replaced					
shotcrete	retn walls	basements	basements	retn walls	digital:
	canals			one-coat stucco	skateparks
	tunnels	power plants	retn walls	hardscape	pools
forming	vent shafts	vaults	barriers	3D-print	faux stone
	wind turbine towers	silos / chimneys	towers	multistory	sound walls
	floating wind arrays	towers / shafts	elev shafts	elev shafts	disaster support
				high rise	military deployment
\$120b ←	\$22b	\$24b	\$14b	\$40b	\$20b

Patents Protect Profits

- SAM used is **only 15%** of the \$120b = \$18b
- Product sales only: • admix • hardware • robotics
- No construction or contracting in this SOM model:



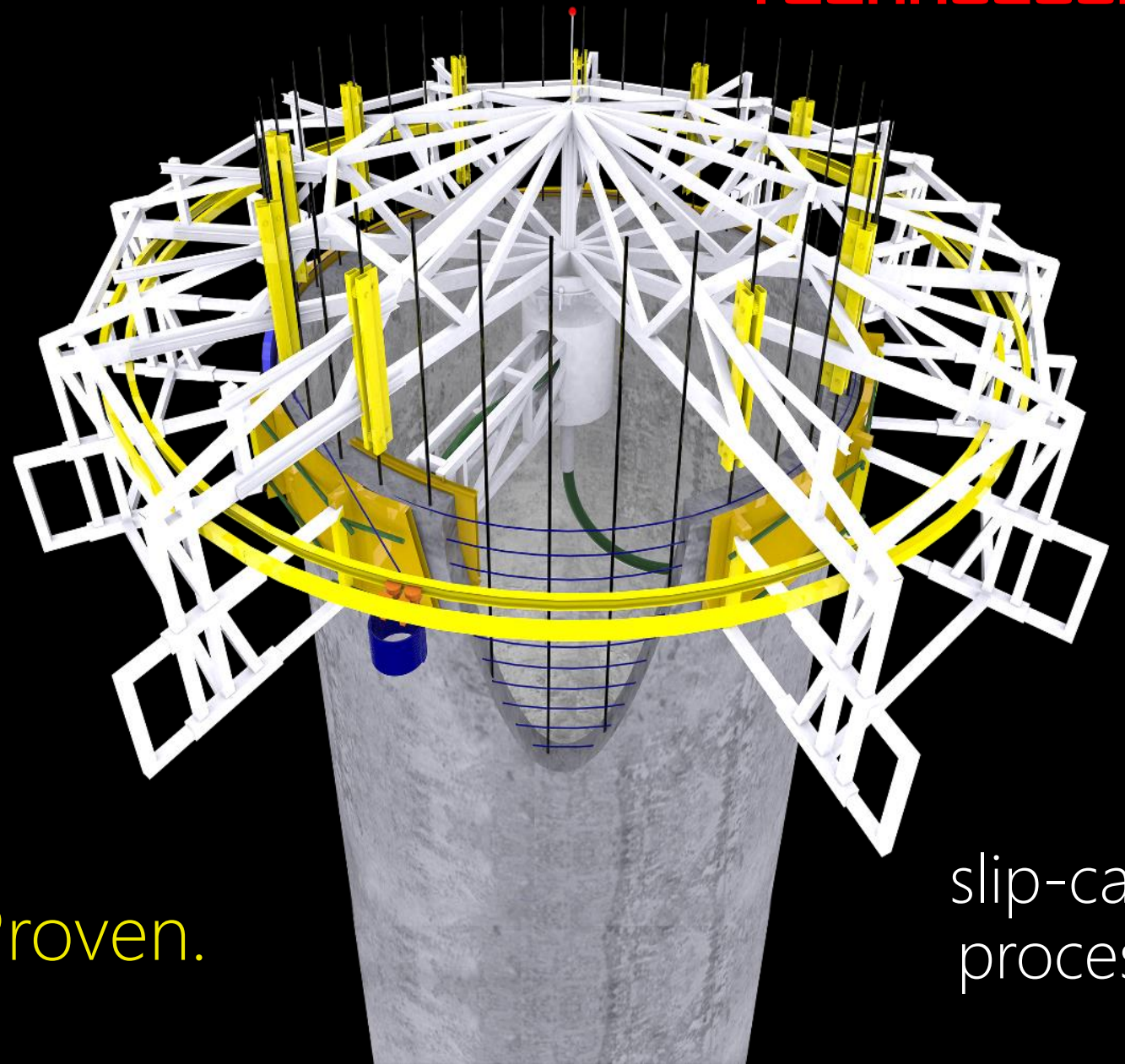
15. no limits

SpaceCrete™
TECHNOLOGIES

INEVITABLE

less time
less labor
less cement
less waste
less cost
less CO₂

Broad Patents. Job Proven.



slip-cast
process